

## How to Connect the TI-84 Plus Calculator and PC

Use the TI Connectivity USB Graph Link Cable to connect your calculator to your computer. The small end fits in the left hole on the top of your calculator, and the larger end plugs into one of your computer's USB ports.

Remember that the cable running from the embosser must be plugged into the USB port on the left side of the computer about in the middle. It is the one closest to the back of the computer.

## Graph and Print or Emboss

To print a graph to either a printer or an embosser, follow these steps:

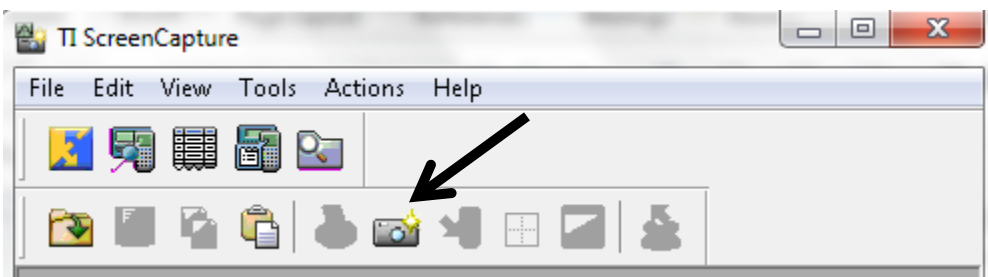
1. Create a graph or multiple graphs on the TI-84 Plus.
2. Run the TI Connect Software on the computer.



3. Choose Screen Capture from the menu options.



4. Select Get Screen from the Actions drop-down menu or CTRL G. You can also click on the Camera icon in the toolbar. You will also need to click Select.



5. Choose Default Screen Size from the View drop-down menu if you wish to change the size of the graph.
6. Save the graph in a file on your computer.
7. Open the file in an image program on your computer.
8. Print to the embosser or printer of your choice. Be sure the Emprint embosser is selected as the printer.